

art'otel

LONDON BATTERSEA  
POWER STATION



**PRESS.  
MEDIA.  
FILM.**



**We recognise that press junkets offer a structured format for media to engage with talent, both in front of and behind the camera. With our guide and support you can let the storytelling begin.**

art'otel London Battersea Power Station is one of the capital's most unique choices to hold your press junket. This new iconic destination is located just three stops away from Waterloo station on the Northern line, and just a short trip to all the major airports. Conveniently, London Heliport located in Battersea is only a 15-minute drive away. Our experienced and dedicated team will manage every detail of your booking and if privacy is required, there is the option for talent to arrive via a secondary entrance.

The unique interiors designed by our Signature Artist Jaime Hayon create a first impression like no other, add to this our destination restaurants TOZI Grand Cafe and JOIA nestled on the 15th Floor with sweeping views across the Power Station chimneys you're sure to set the right tone for your talent and media guests.

A selection of flexible creative spaces and signature suites will help organisers find their ideal solution to suit their needs, enabling a seamless and smooth-running function.

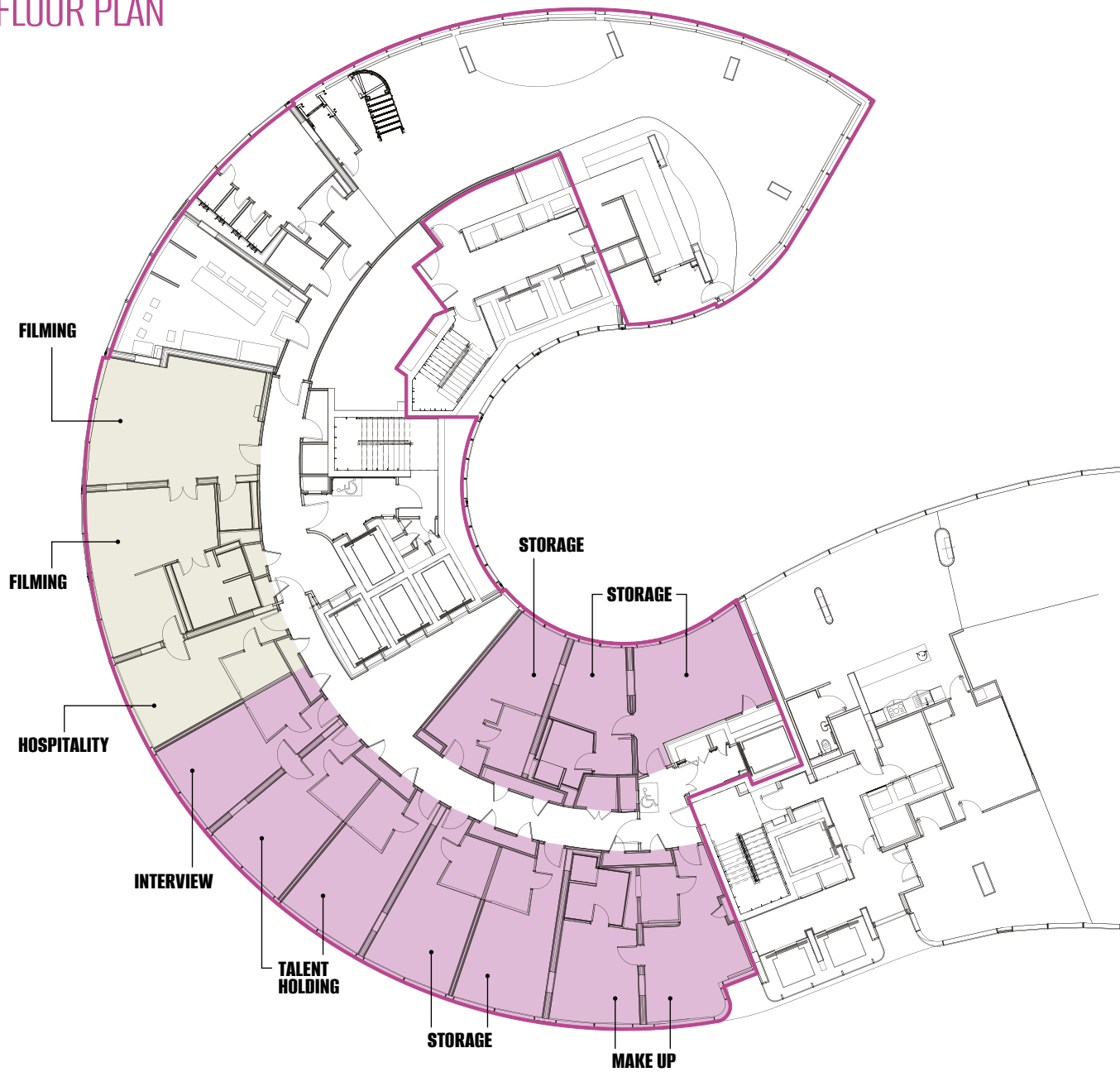






# 14TH FLOOR

## FLOOR PLAN





◀ **Exclusive use of an entire floor of the hotel is possible for press junkets with complete privacy and discretion. Access can be arranged via a dedicated guest lift.**

Hospitality Suite – a stylish and bright, spacious suite with views of the Battersea Power Station, plenty of relaxed and comfortable seating and complimentary high-speed Wi-Fi. Light refreshments will be served by our attentive team.

Interview Suite – extending from the Hospitality Suite this art inspired space is relaxed and has the flexibility for a range of stylish seating options, the interconnecting room is ideal as Talent Holding or for discreet Crew access.

Filming Suite – a comfortable suite with space large enough for both one and two camera interview set-ups. Production team and agent have plenty of space in the adjoining space with a bathroom available for hair and make-up touch ups. A dedicated Monitor and Tech Room is located right beside the Filming Suite.

Additional bedrooms on the floor can be used as essential Storage Rooms or for additional Talent Holding.

Crew access to the floor for delivery of equipment is straightforward with a dedicated service lift from our Loading Bay.

## HOSPITALITY SUITE

Media have access to the Hospitality Suite's high-speed Wi-Fi and can enjoy the relaxed setting of this remarkable art-inspired space. Refreshments will be provided for media and there is a bathroom within the suite for comfort breaks.

## INTERVIEW SUITE

Various interviews can be accommodated in this bright space from individual to group discussions with an immediately adjoining room for Talent Holding and discreet access.

## FILMING SUITE

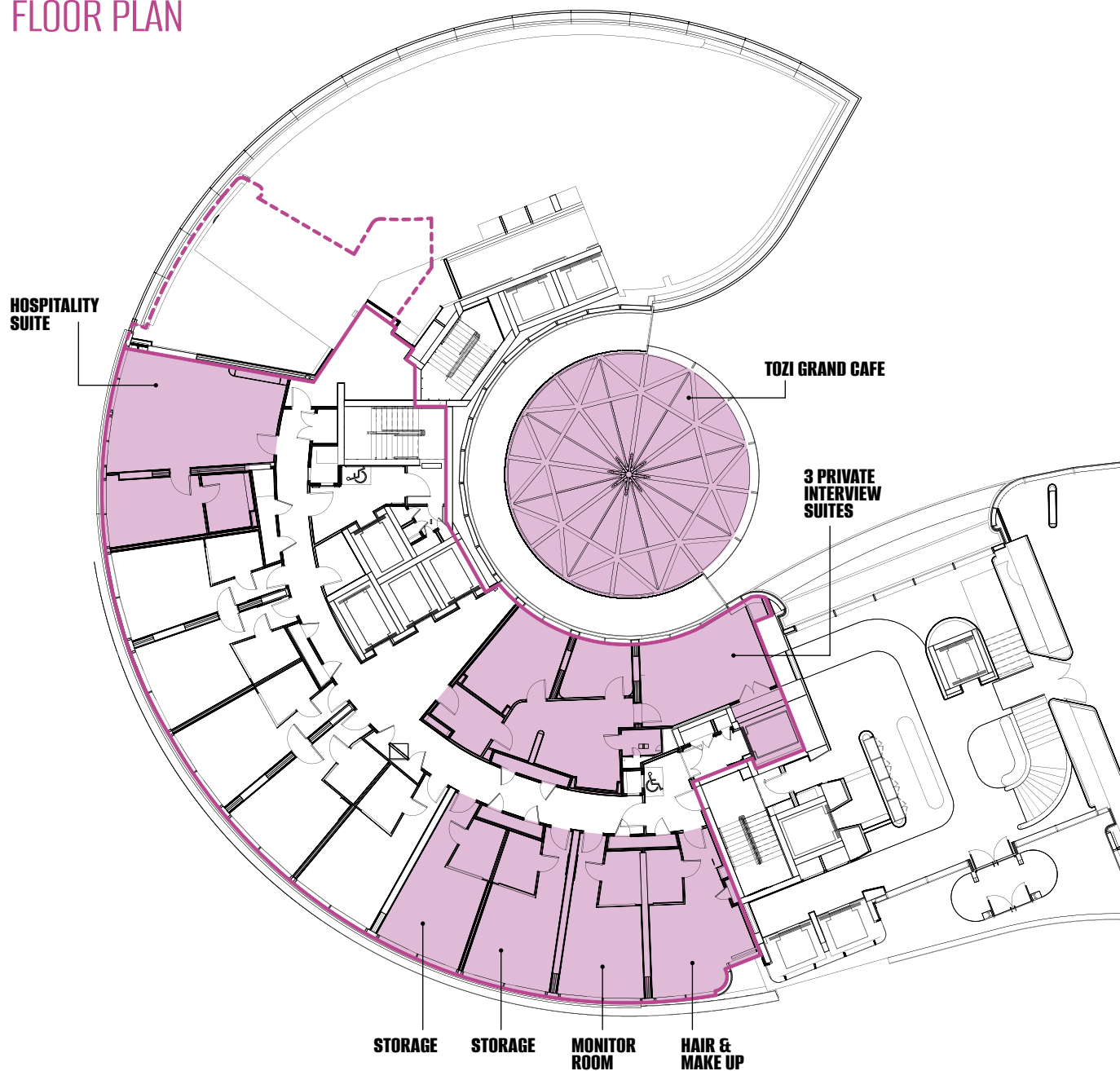
A generous space with comfortable seating ideal for one or two camera set ups. With a convenient space for the production team, comfort facilities within the suite and Hair and Make Up Room directly adjacent.

The Monitor Room is immediately next door for convenience.





# 1ST FLOOR FLOOR PLAN





Organisers looking for a smaller capacity function but with all the benefits and facilities required can consider our 1st Floor, where 3 private Interview Suites can be used, ideal for 4, 8 or 12 guests. A Hospitality Suite with bold artistic designs and floor to ceiling windows looking out onto the Battersea Power Station development provides a comfortable and stylish setting. A range of rooms complement the set up and can be used for Talent Holding, Storage, Monitor Room and Hair & Make-Up.

### **ART'OTEL LONDON BATTERSEA POWER STATION**

London's stand out art inspired hotel in the heart of the iconic new Battersea Power Station neighbourhood, fuses art, design and hospitality. art'otel London Battersea Power Station features a breath-taking rooftop pool overlooking the famous chimneys, JOIA Restaurant and Bar with floor-to-ceiling windows and skyline view, TOZI Grand Cafe and a range of creative spaces.

Situated just a 2 minute walk from the Zone 1 underground station, the hotel has 164 stylish bedrooms, including 4 Suites created by award-winning artist, Jaime Hayon and is perfectly located to access anywhere in the city and beyond.

### **TOZI GRAND CAFE**

Italian cafe and sandwich bar inspired by the charming 'Panineries' and aperitivo bars found along the winding streets of Italy's picturesque towns. Wine and chichetti focus by evening.

### **JOIA RESTAURANT & BAR**

JOIA is an Iberian restaurant, bar and rooftop located in the heart of Battersea Power Station's new neighbourhood. Conceptualised by award winning Portuguese chef, Henrique Sá Pessoa, JOIA showcases Henrique's vibrant, unique and fresh takes on traditional dishes using the best of British and Iberian produce.





# artotel

LONDON BATTERSEA  
POWER STATION



## **FIND OUT MORE HERE**

### **OUR DEDICATED TEAM**

[events.battersea@artotel.com](mailto:events.battersea@artotel.com)

[artotellondonbattersea.com](http://artotellondonbattersea.com)

[@artotellondonbattersea](https://www.instagram.com/artotellondonbattersea)

[@artotel](https://www.instagram.com/artotel) [#myartotel](https://www.instagram.com/myartotel)

1 Electric Boulevard, London SW11 8BJ